

# CONSTRUCTION PLAN OF PROPOSED POST OFFICE ALLEY

## WOODLAND PARK TELLER COUNTY, COLORADO

### GEOMETRIC LAYOUT PLAN

Project Name: Post Office Alley  
Woodland Park, Colorado  
Horizontal Alignment Name: hc\_fl-pan (Flow Line of Drainage Pan)

	STATION	NORTHING	EASTING
Element: Linear			
POB ( )	0+00.00	1689.10	3866.20
PC ( )	0+04.81	689.10	3861.39
Tangent Direction:	S 89°58'00" W		
Tangent Length:	4.81		
Element: Circular			
PC ( )	0+04.81	689.10	3861.39
P ( )	0+11.31	1689.10	3854.89
CC ( )		1695.60	3861.39
PT ( )	0+15.02	1695.60	3854.89
Radius:	6.50		
Delta:	90°00'00" Right		
Degree of Curvature(Arc):	881°28'25"		
Length:	10.21		
Tangent:	6.50		
Chord:	9.19		
Middle Ordinate:	1.90		
External:	2.69		
Tangent Direction:	S 89°58'00" W		
Radial Direction:	N 0°02'00" W		
Chord Direction:	N 45°02'00" W		
Radial Direction:	N 89°58'00" E		
Tangent Direction:	N 0°02'00" W		
Element: Linear			
PT ( )	0+15.02	1695.60	3854.89
POE ( )	3+34.14	2014.72	3854.70
Tangent Direction:	N 0°02'00" W		
Tangent Length:	319.12		



### INDEX OF SHEETS

SHEET NO.	SHEET DESCRIPTION
1	TITLE SHEET
2	TYPICAL SECTIONS
3-4	PLAN AND PROFILE SHEETS

### NOTES

- CONSTRUCTION SHALL BE IN ACCORDANCE WITH COLORADO DEPARTMENT OF TRANSPORTATION (CDOT) STANDARD SPECIFICATIONS FOR ROAD AND BRIDGE CONSTRUCTION, 2005 AND THE CDOT M&S STANDARDS, 2006.
- ASPHALT PAVEMENT SHALL BE IN ACCORDANCE WITH THE PIKES PEAK REGION ASPHALT PAVING SPECIFICATIONS, VERSION 2, DATED APRIL 1, 2008.
- IF FIELD CONDITIONS ARE FOUND TO BE DIFFERENT THAN SHOWN ON THE PLANS AND CROSS SECTIONS, THE CONTRACTOR SHALL NOTIFY THE ENGINEER IMMEDIATELY SO THAT APPROPRIATE ACTION CAN BE TAKEN BY THE OWNER.
- UTILITY LINES AS SHOWN ON THE PLANS ARE PLOTTED FROM THE BEST AVAILABLE INFORMATION. CONTRACTOR SHALL CONTACT ALL NECESSARY UTILITIES FOR LOCATIONS PRIOR TO ANY DIGGING.
- ADDITIONAL ITEMS NECESSARY TO COMPLETE THE WORK AS SHOWN ON THE PLANS SHALL NOT BE PAID FOR SEPARATELY, BUT SHALL BE INCLUDED IN THE COST OF OTHER PAY ITEMS.

### SUMMARY OF QUANTITIES

ITEM NO.	ITEM DESCRIPTION	UNIT	BASE QUANTITY	ADD ALT 1 QUANTITY	ADD ALT 2 QUANTITY
202-00035	Removal of Pipe	LF	40		
202-00220	Removal of Asphalt Mat	SY	550	289	156
203-00010	Unclassified Excavation (Complete In Place)	CY	180	48	26
206-00000	Structure Excavation	CY	322		
304-06000	Aggregate Base Course (Class 6)	TON	164	86	47
306-01000	Sub-base Reconditioning	SY	550	289	156
403-33821	Hot Mix Asphalt (Grading S)(100)(PG 58-28)	TON	85	54	32
411-10255	Emulsified Asphalt (Slow-Setting)	GAL	39	25	15
412-00500	Concrete Pavement (6")	SY	61	44	
609-24000	Gutter Type 2 (Special)	LF	260		27
603-02180	23x14 Inch Reinforced Concrete Pipe Elliptical	LF	53		
603-05118	23x14 Inch Reinforced Concrete End Section Elliptical	EA	2		

### LOCATION MAP

NOT TO SCALE

DECEMBER, 2010

### Computer File Information

URS File Location: s031w2kfile1\projects\21711788\T10008	(R-)
Last Modification Date: 28-Jan-11 Operator: john_reese	(R-)
Mapped Path: p:\7.0_cad_gis\plan_sheets	(R-)
Drawing File Name: ge-cover.dwg	(R-)
Acad. Ver. 2011 11x17 Scale: AS Shown Units: Feet	(R-)

### Index of Revisions

NO.	DESCRIPTION	DATE



**URS**

9960 FEDERAL DRIVE  
SUITE 300  
COLORADO SPRINGS, CO 80921  
(719) 531-0001

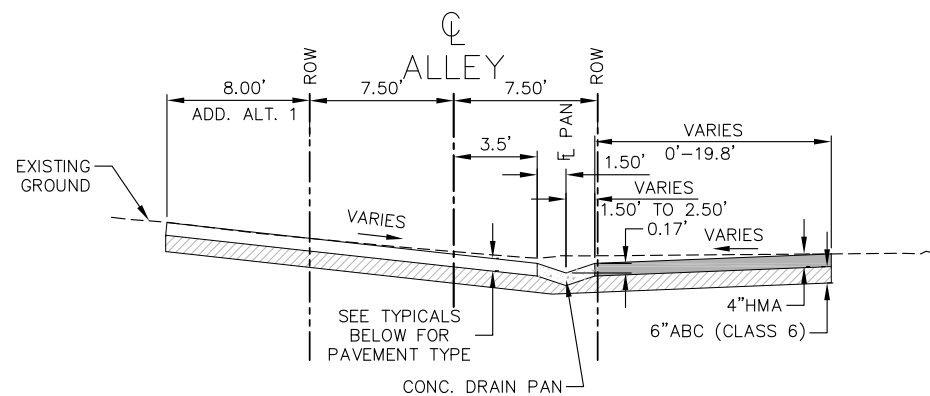
WOODLAND PARK ALLEY IMPROVEMENTS

JN: 21711788

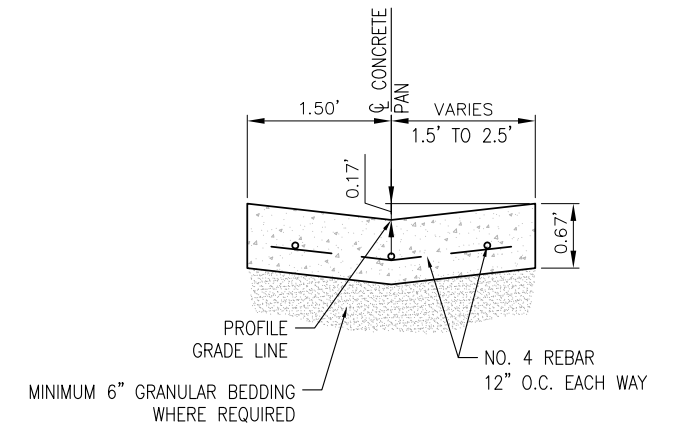
COVER SHEET

Subset: 01 of 04

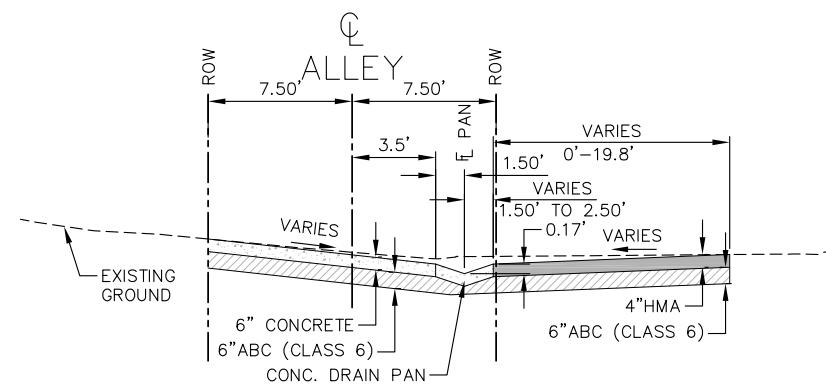
Sheet Number 001



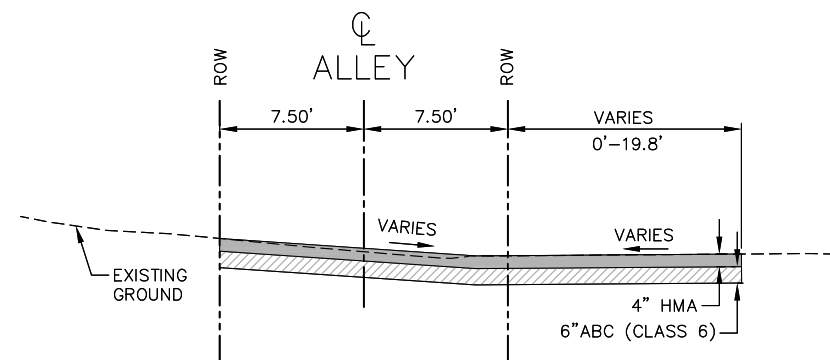
ADD-ALT 1 SECTION  
STA 0+15.47 TO STA.3+21.18



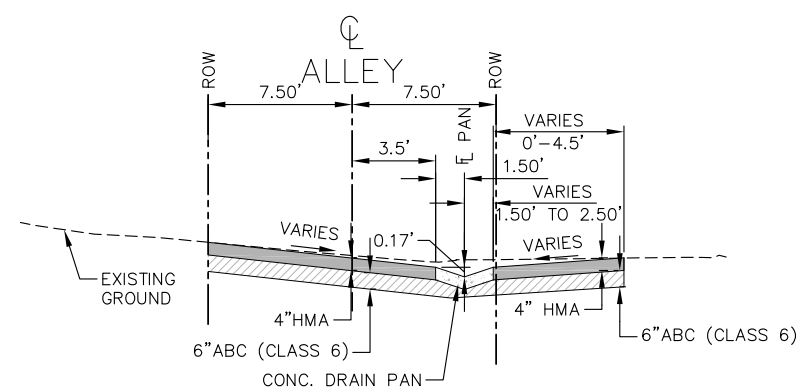
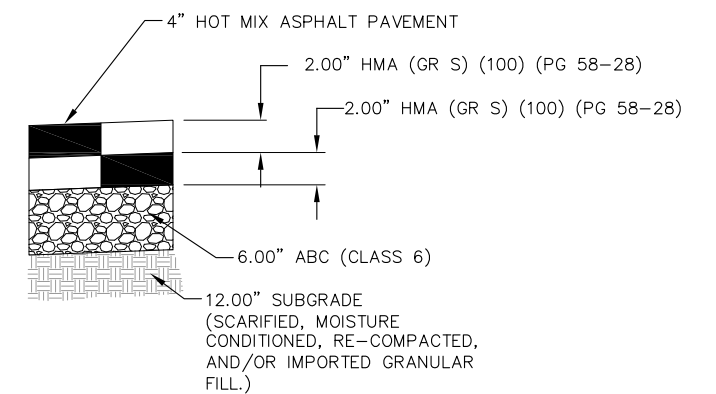
GUTTER TYPE 2 (SPECIAL)



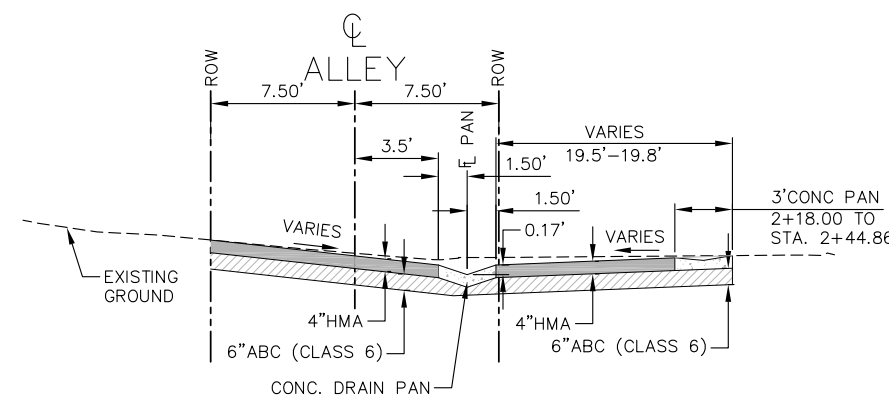
STA 1+35.67 TO STA.1+85.73



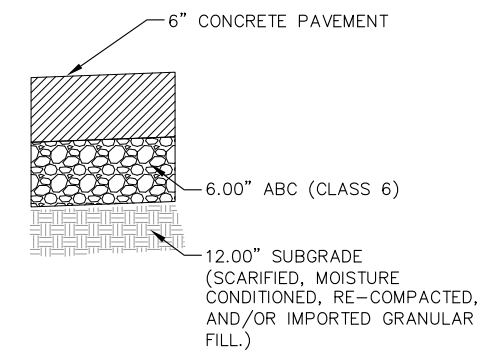
STA 2+59.56 TO STA. 3+21.18



STA 0+15.47 TO STA. 1+35.67



STA 1+85.73 TO STA.2+59.56

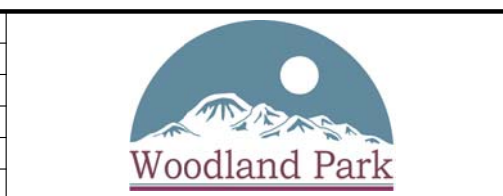


PAVEMENT SECTIONS \*

\* SEE GEOTECHNICAL INVESTIGATION REPORT FROM KLEINFELDER DATED DECEMBER 16, 2010.

Computer File Information	
URS File Location: s031w2kfile1\projects\21711788\T10008	(R-)
Last Modification Date: 28-Jan-11 Operator: john_reese	(R-)
Mapped Path: p:\7.0_cad_gis\plan_sheets	(R-)
Drawing File Name: rdt-alley.dwg	(R-)
Acad. Ver. 2011 11x17 Scale: AS Shown Units: Feet	(R-)

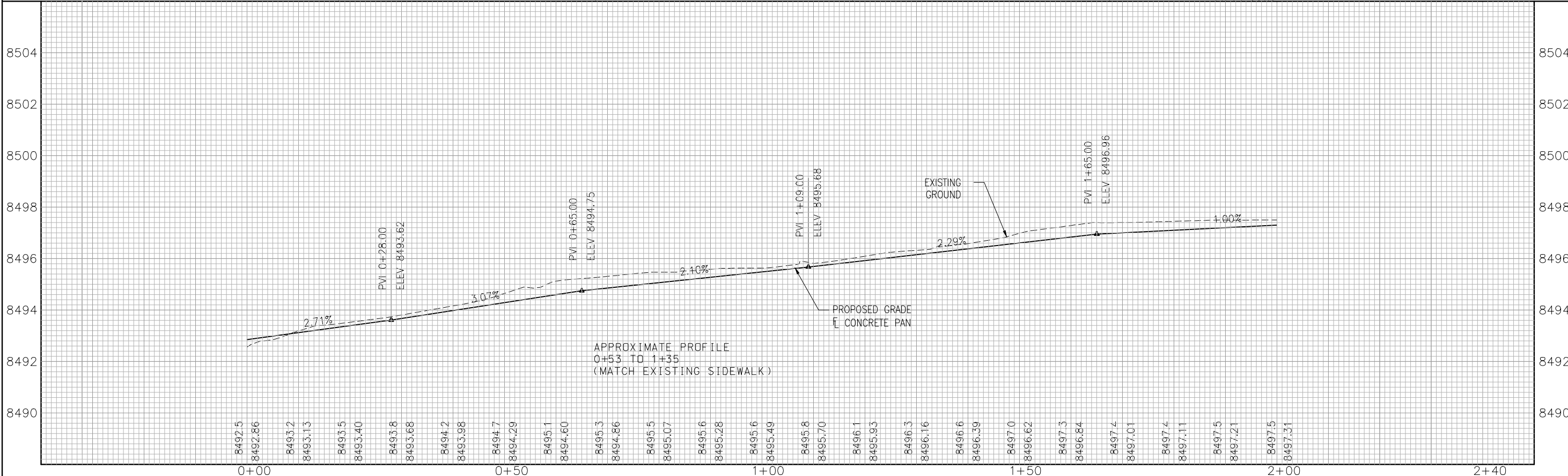
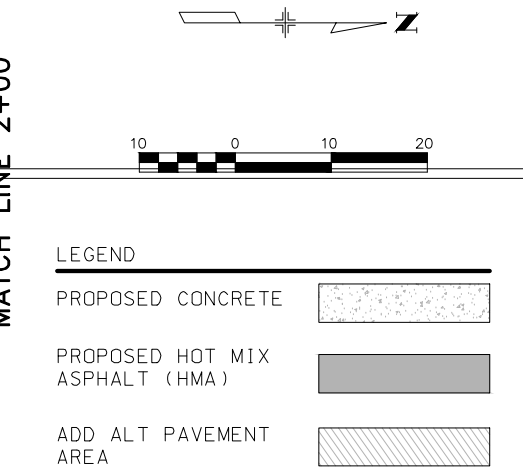
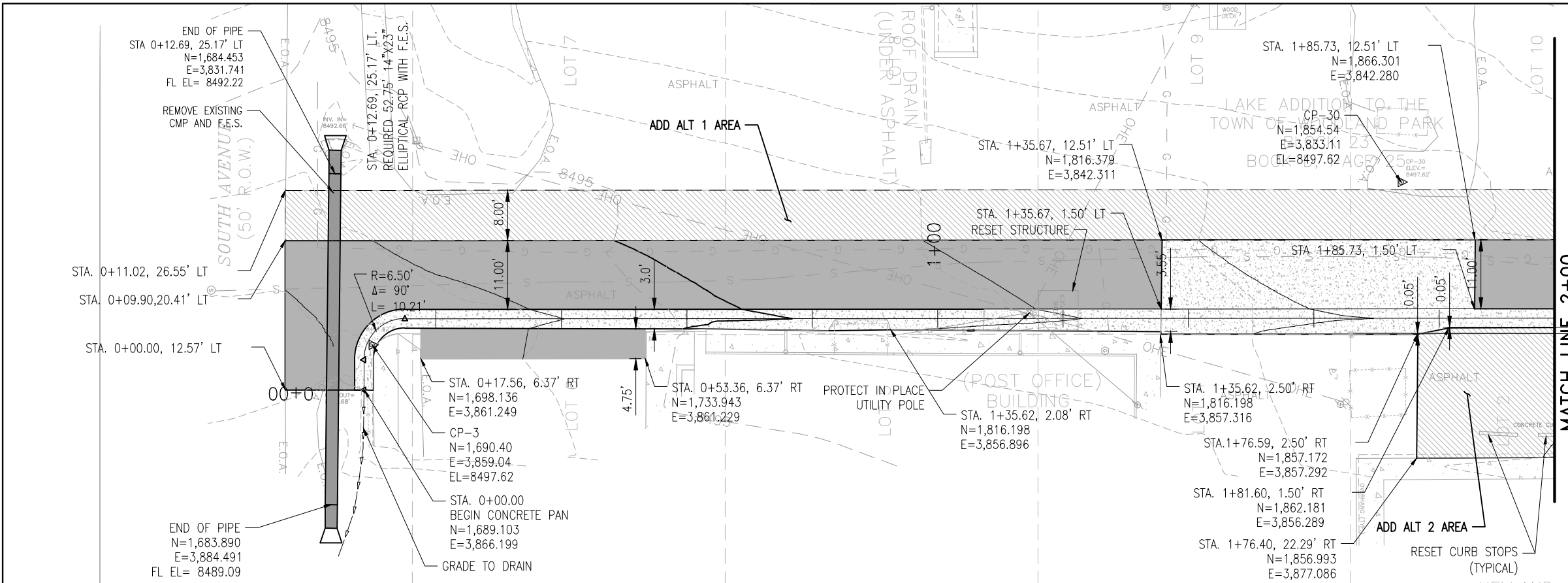
Index of Revisions	



**URS**  
9960 FEDERAL DRIVE  
SUITE 300  
COLORADO SPRINGS, CO 80921  
(719) 531-0001

**WOODLAND PARK ALLEY IMPROVEMENTS**  
**TYPICAL SECTIONS**

**JN: 21711788**  
Subset: 02 of 04  
Sheet Number **002**



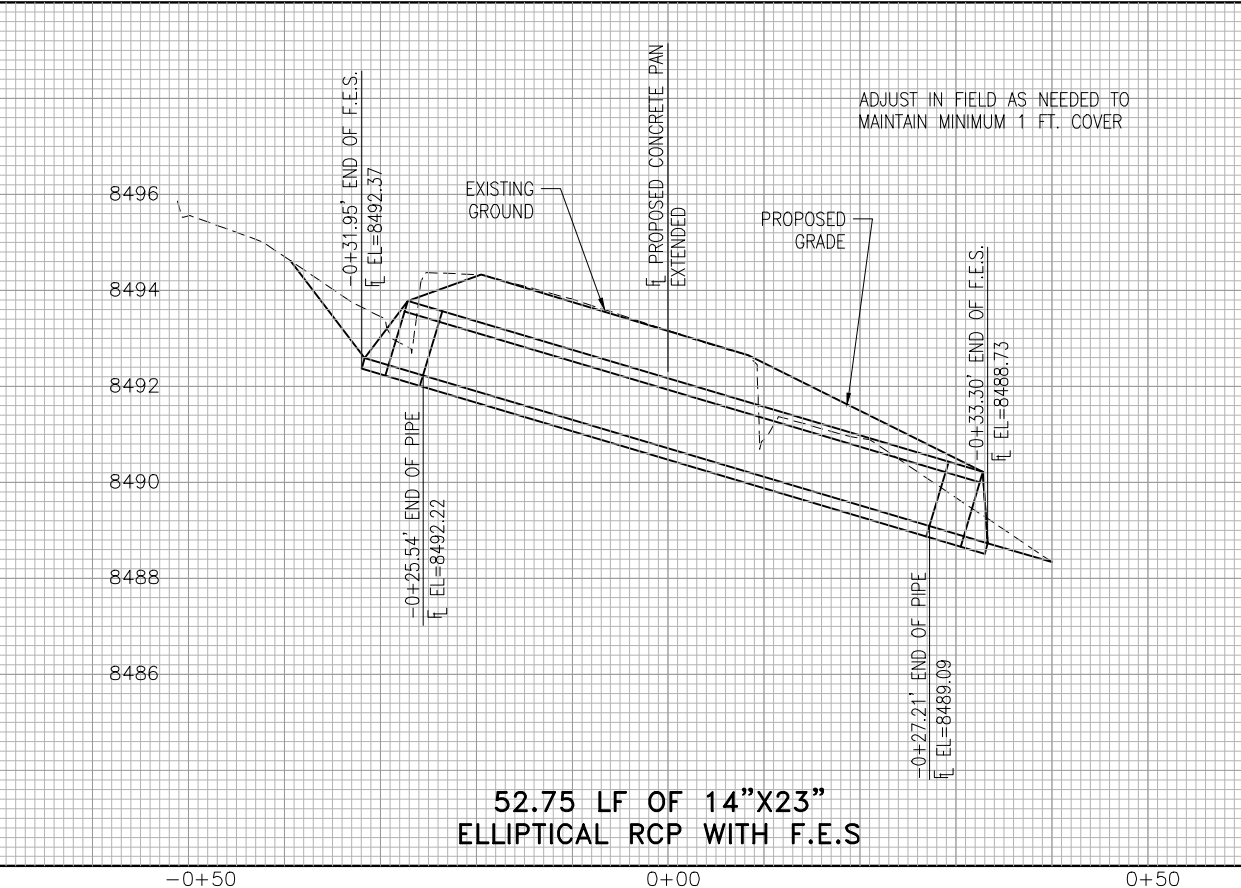
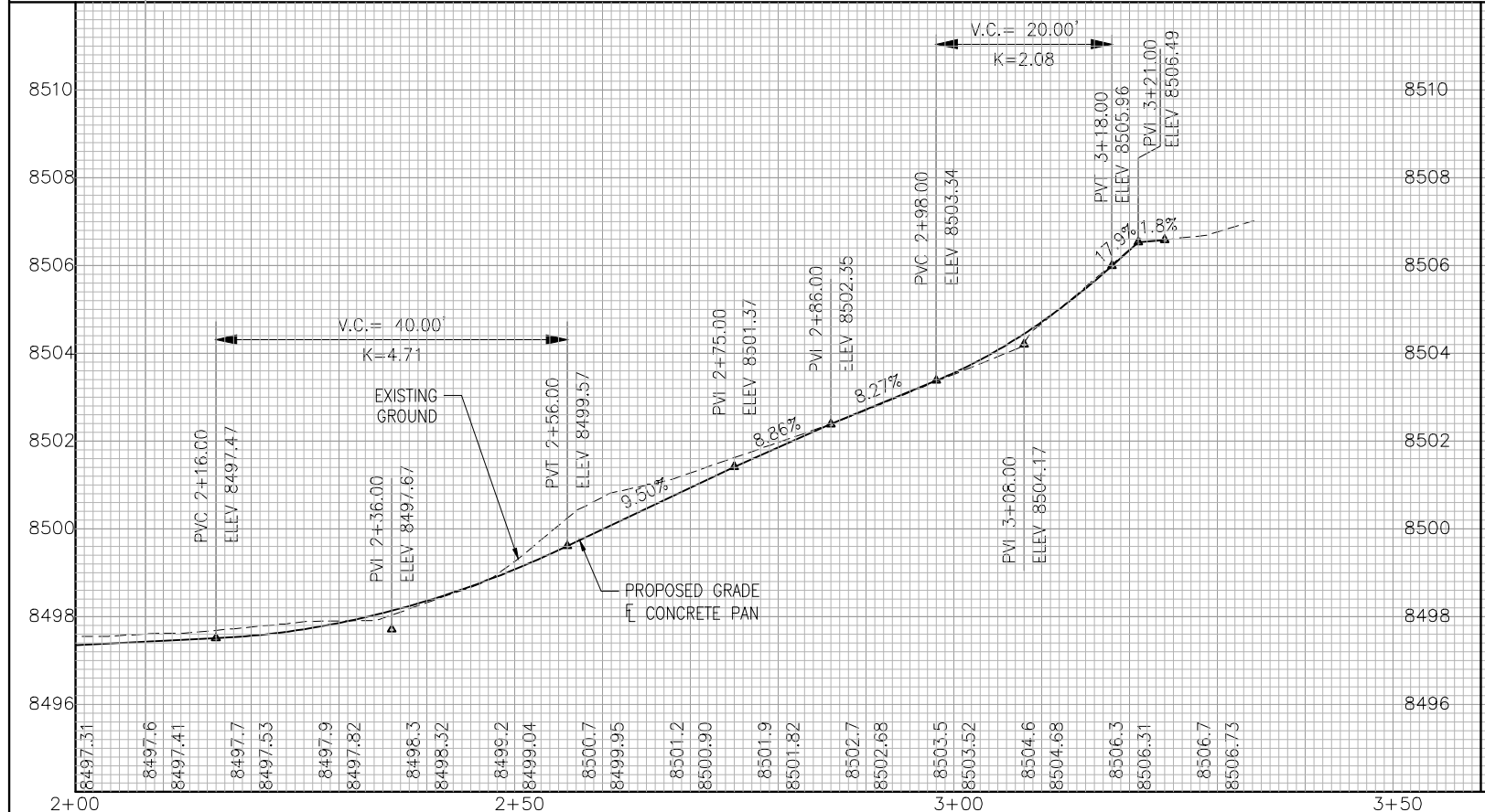
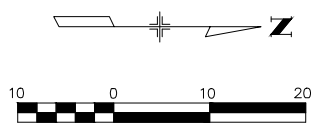
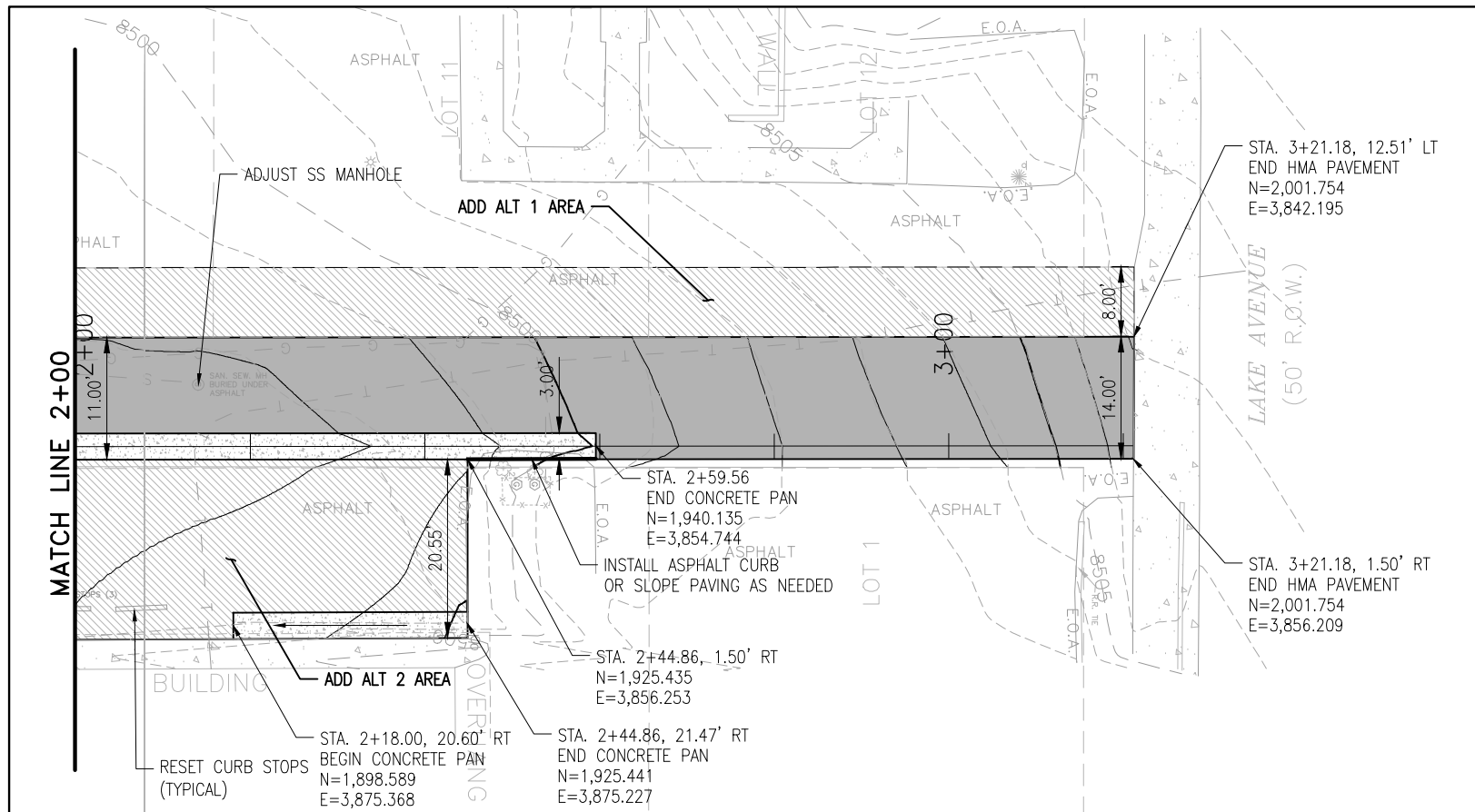
Computer File Information	
URS File Location: s031w2kfile1\projects\21711788\T10008	(R-)
Last Modification Date: 28-Jan-11 Operator: john_reese	(R-)
Mapped Path: p:\7.0_cad_gis\plan_sheets	(R-)
Drawing File Name: rdpp-001.dwg	(R-)
Acad. Ver.2011 11x17 Scale:AS Shown Units: Feet	(R-)

Index of Revisions	



**URS**  
 9960 FEDERAL DRIVE  
 SUITE 300  
 COLORADO SPRINGS, CO 80921  
 (719) 531-0001

WOODLAND PARK ALLEY IMPROVEMENTS		JN: 21711788
<b>POST OFFICE ALLEY PLAN AND PROFILE</b>		Subset: 03 of 04
		Sheet Number <b>003</b>



52.75 LF OF 14"X23" ELLIPTICAL RCP WITH F.E.S.

Computer File Information	
URS File Location: s031w2kfile\projects\21711788\T10008	(R-)
Last Modification Date: 28-Jan-11 Operator: john_reese	(R-)
Mapped Path: p:\7.0_cad_gis\plan_sheets	(R-)
Drawing File Name: rdpp-001.dwg	(R-)
Acad. Ver. 2011 11x17 Scale: AS Shown Units: Feet	(R-)

Index of Revisions	



**URS**  
 9960 FEDERAL DRIVE  
 SUITE 300  
 COLORADO SPRINGS, CO 80921  
 (719) 531-0001

**WOODLAND PARK ALLEY IMPROVEMENTS**  
**POST OFFICE ALLEY**  
**PLAN AND PROFILE**

**JN: 21711788**  
 Subset: 04 of 04  
 Sheet Number **004**